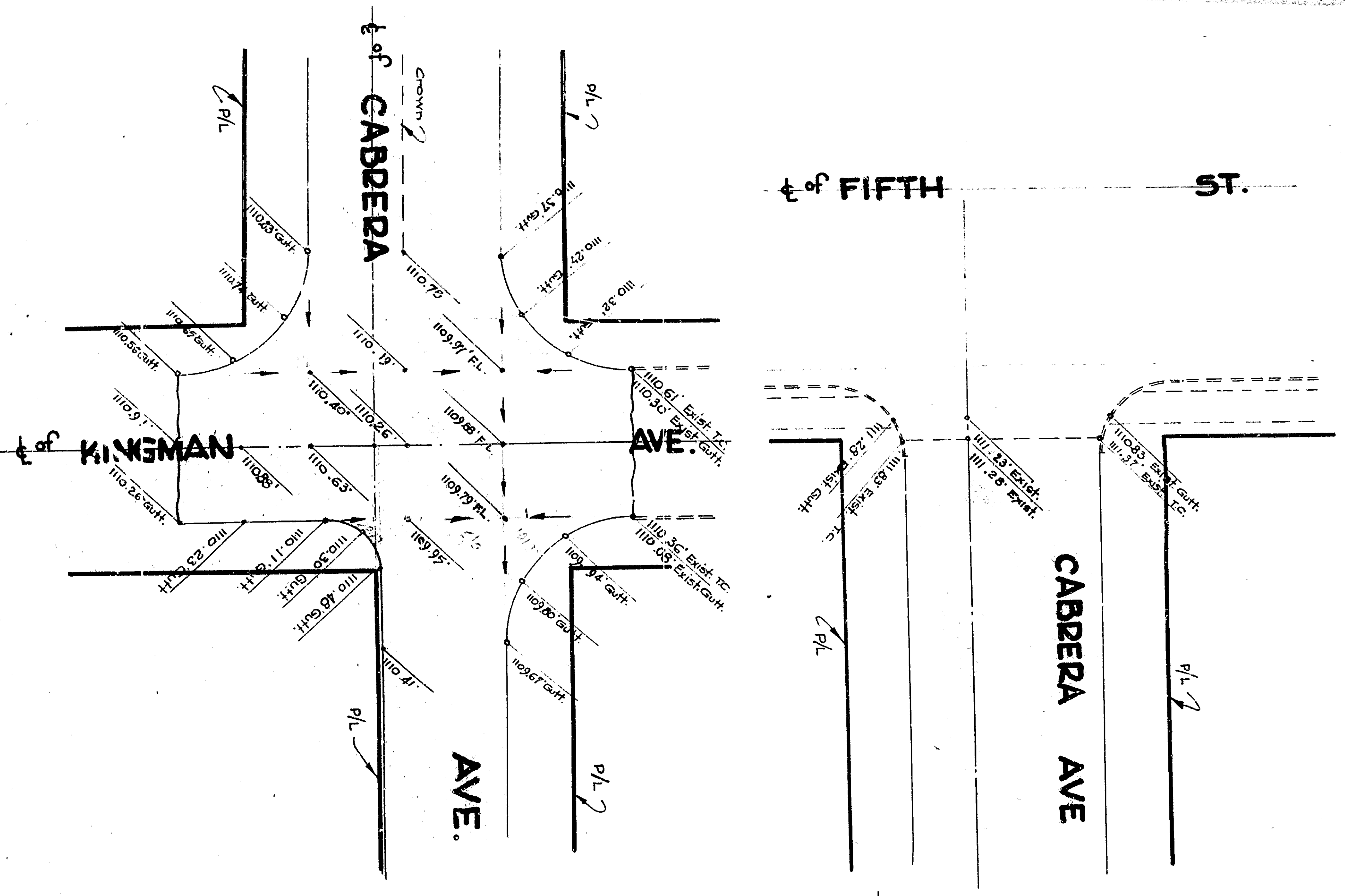
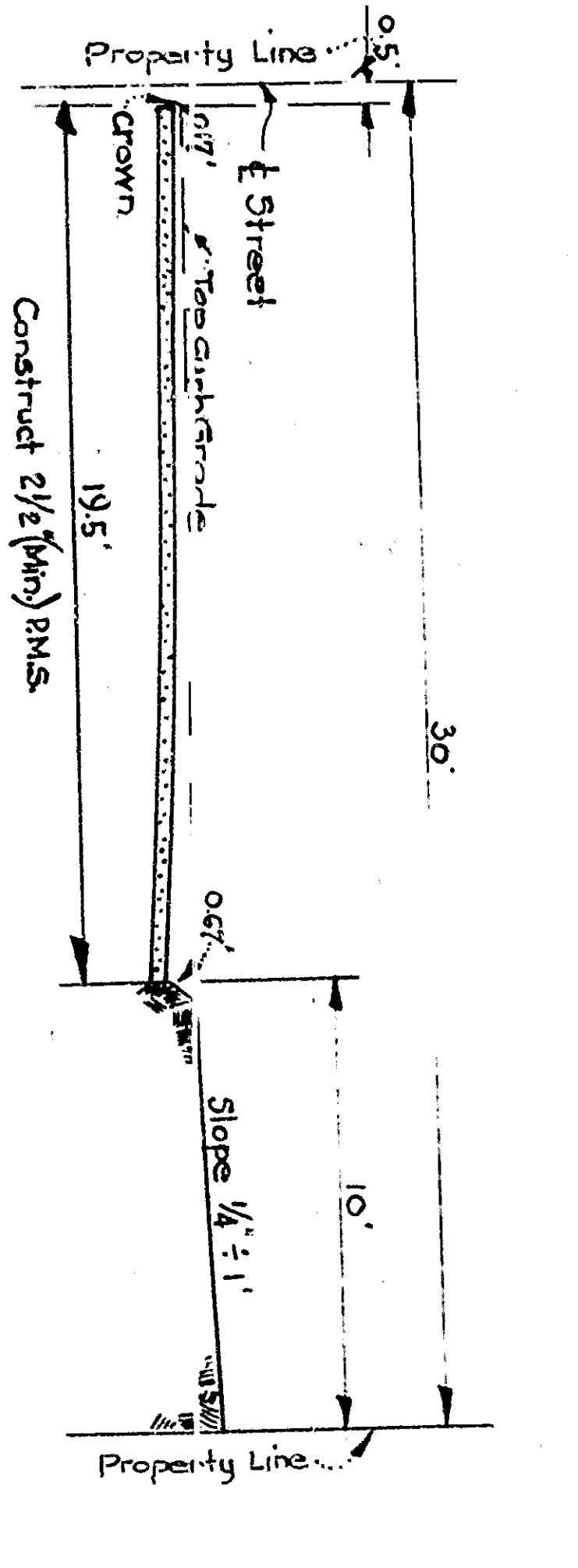


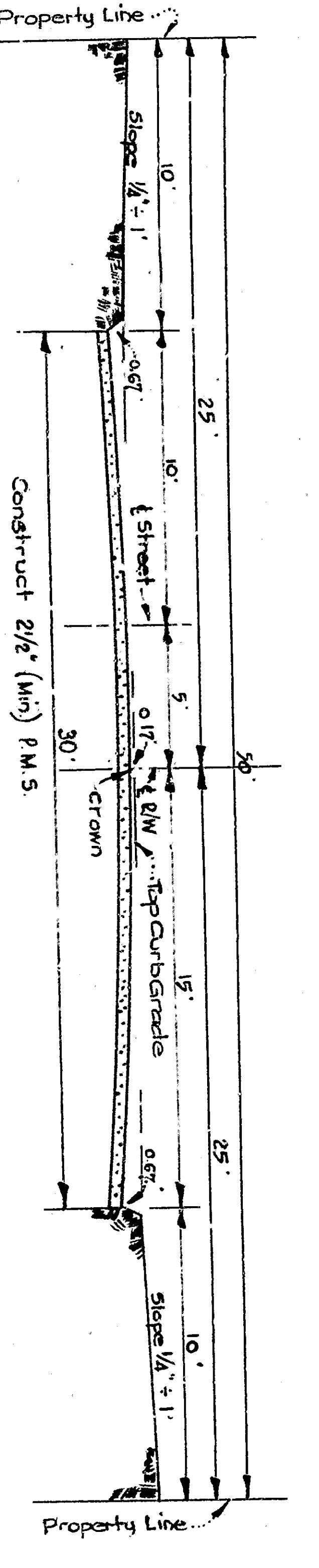
**INTERSECTION LEVELS**  
Scale 1" = 20'



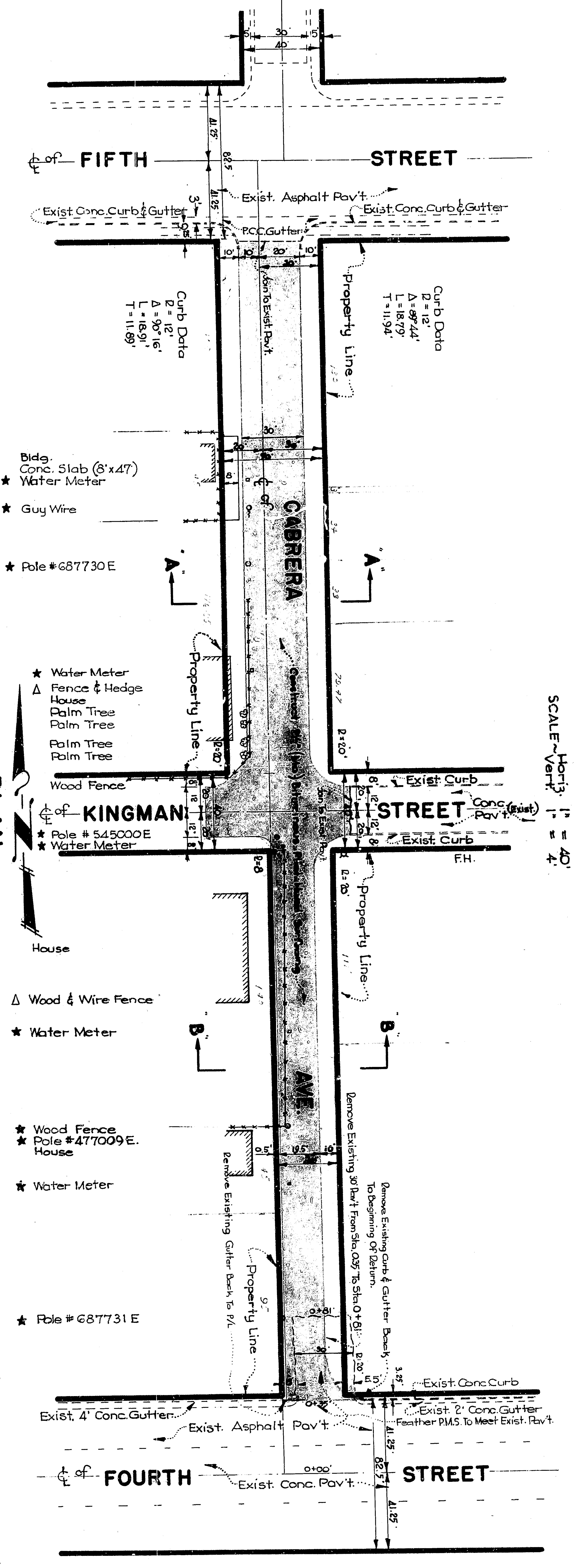
**SECTION B-B**  
Scale 1" = 60'



**SECTION A-A**  
Scale 1" = 60'



**PLAN**  
SCALE 1" = 40'



BENCH MARKS:  
E110086 on Point At 4th Street  
E110085 on Cabreria Ave.

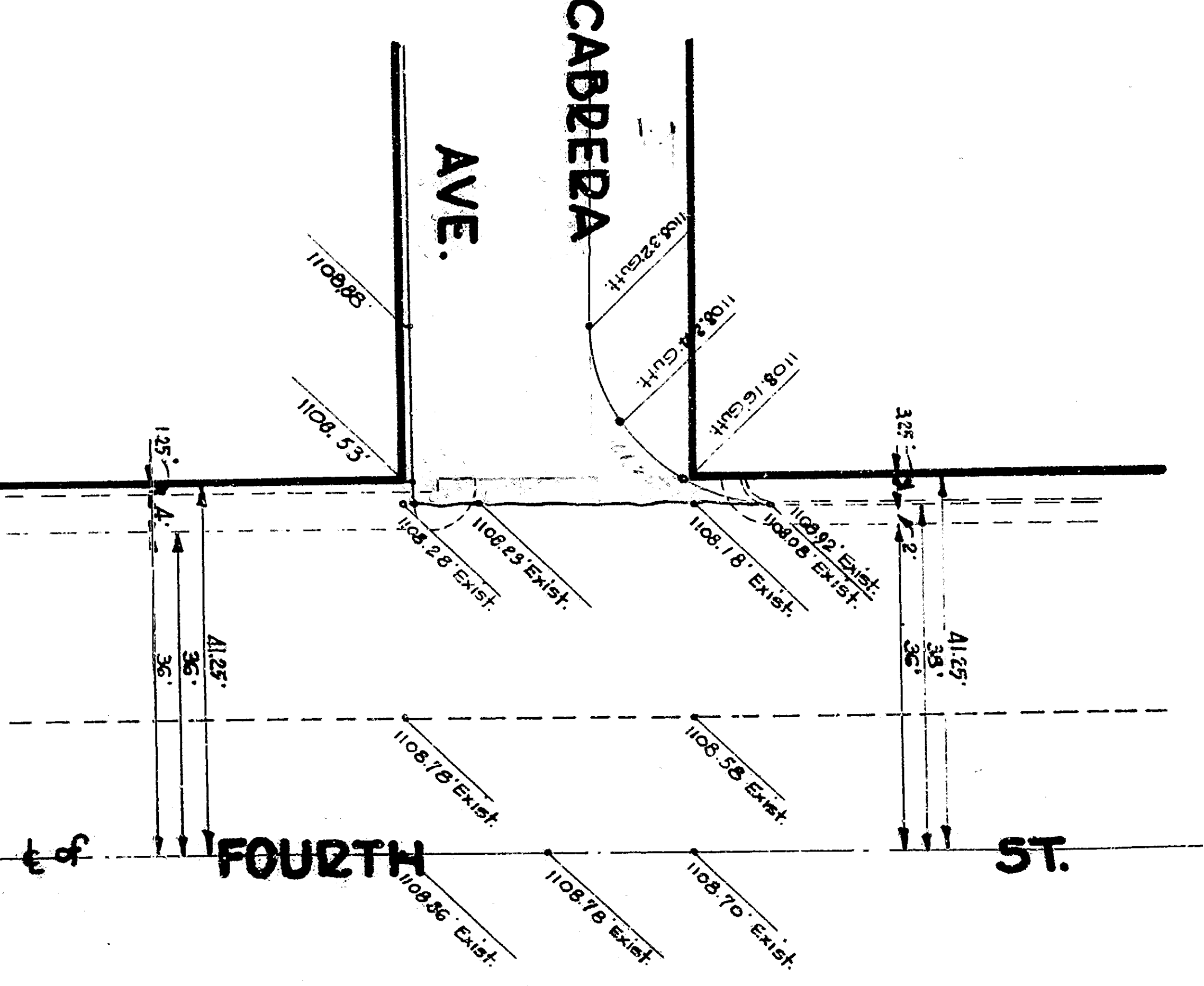
**NOTE:**  
All work embodied on these plans shall be done in accordance with the provisions of Specifications No. 8271.  
\* To be removed by others.  
Δ Contractor to remove existing fence and place an adjacent property (not to be constructed)

**PLAN ADOPTED**

**CITY OF SAN BERNARDINO**  
DEPARTMENT OF ENGINEERING  
**CABRERIA AVE.**  
BETWEEN FOURTH STREET & FIFTH STREET  
PAVING

SUBMITTED BY	DATE	DRAWN BY	CHECKED BY	REGISTERED CIVIL ENGINEER NO.
APPROVED	9	J. A. B.	J. A. B.	2145

**INTERSECTION LEVELS**  
SCALE 1" = 20'



**PROFILE**  
SCALE - Vert. 1" = 40'

